

## INTRODUCTION

Integrator RD radio dispatch application software executes under Microsoft Windows® 2000, or Windows® XP Pro. Integrator RD may be run concurrently with other well-behaved applications and minimized or cropped as necessary to support multiple windows on a single screen. Integrator RD is also fully supportive of touchscreen operation with an appropriate touchscreen monitor.

The radio dispatch application makes full use of Windows networking capabilities — configuration files defining the “personality” of the console may be stored on a central file server to minimize the workload associated with configuration management of a large multi-operator console. In the event that the server fails or is unavailable, the Integrator RD application loads a copy of the configuration file from its local hard drive. To ensure compatibility with the widest range of network protocols, Integrator RD maintains an open architecture. The system integrator or end-user may install network interface cards for any supported protocol.

## FEATURE SUMMARY

- Supports up to 48 channels – any combination of radio, telephone, intercom, or PA
- Up to 36 Channel Resource Icons may be presented on one screen. Channel resources and critical controls are always visible and readily accessible.
- Six Screen Select Keys allow instant call-up of previously defined screens to suit operator preference or changing shift requirements
- Up to 16 operating positions – may be mixed with button consoles
- User interface supports mouse driven or touchscreen operation (requires separately procured touchscreen monitor)
- Available as a complete system (PC, Audio Panel, Windows® OS software, cables, etc.) without monitor, or as individual components less PC and monitor
- Call History Window with 20 character aliases
- Compatible with conventional (Tone, DC, E&M) and wireless applications (EDACS®, iDEN®, LTR®, , P25, SmartZone® and MPT 1327/ MAP27)
- Supports networked configuration with centralized configuration file management
- Supports concurrent execution of other Windows® 2000/Windows® XP applications with radio dispatch console software
- Compatible with separately procured multiple monitor cards for multi-monitor usage
- DTMF, Zetron Alert, and Mot/GE Two-Tone Paging is Standard — MDC-1200, Quick Call 1 (2 + 2), Plectron, 5/6 Tone, Reach, Knox, and Rotary Dial formats optionally available
- “One-touch” paging operation uses named buttons instead of pager cap codes. Hierarchical menu structure allows pages to be logically grouped for easy access.
- MDC-1200® Full Features
- Login profiles enable or disable advanced features

## INTEGRATOR RD MAIN SCREEN

### Channel Resources

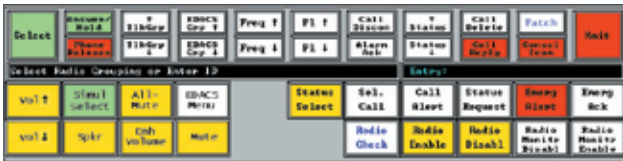


Clearly identifies channel name and presents call activity, transmit status, volume/mute settings and ANI aliases. Select a channel or perform an instant transmit with a single mouse click.

Accommodate up to 36 channel icons on a single screen (16 in MAP27 configurations)

### System Controls

Intuitive control set is easily mastered by operators with minimal training. Includes all standard console functions.



StatusLine provides "real-time" help instructions on selected commands.



Single button controls allows operator to instantly boost highlighted channel volume to hear important calls.



Timed mute of all channels except currently selected one.

### Clock and Transmit Indicator



This prominent display area in the upper right corner of the screen turns red

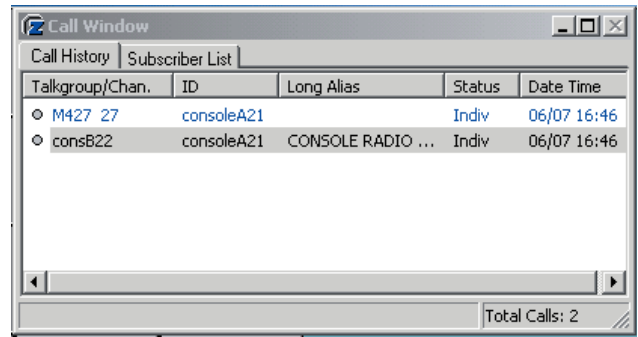
when the console position is transmitting. This is useful for showing observers as well as dispatchers the transmit status of their console position. Time display is synchronized between every position, and with an external master clock if so equipped.

### Alarm Notification and System Messages



This allows any operator to know the health status of the console system.

## Call History Window



When enabled, the call history window displays calls, call alerts and received status codes. Up to 64 calls are maintained in the queue.

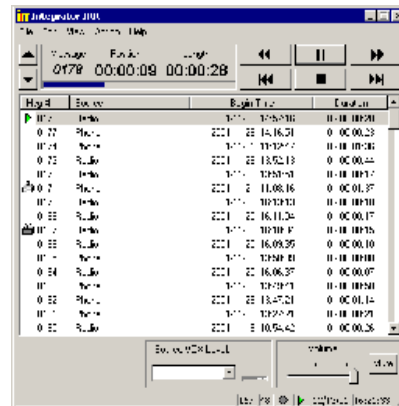
### Sub-Menus



Select a sub-menu for paging, auxiliary I/O, recall recorder control, and group functions. Sub-menus do not affect channel resources or critical system functions.

Control lights, door locks, cameras, and alarms.

## INSTANT RECALL RECORDER



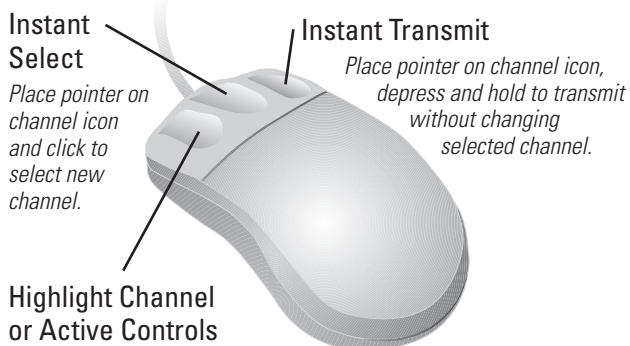
Recall recording is provided by Integrator IRR™ (Instant Recall Recorder), a powerful Windows voice recording application. Adds call recording/playback capability on two channels to

radio dispatch and 9-1-1 dispatch systems. For more information, please contact Zetron for a copy of the Integrator IRR specification sheet, or view it online at [www.zetron.com](http://www.zetron.com).

## HIERARCHICAL PAGING



## THREE BUTTON MOUSE CONTROLS



## MDC-1200 FEATURE HIGHLIGHTS

MDC-1200 signaling provides individual user identification of every radio user. Transmission of this unique digital identification code occurs every time the MDC-1200 compatible radio is keyed. This feature allows the dispatcher to contact individual radio users, or groups of radio users. MDC-1200 also allows control of the system to silently test other radios in the field, disable any lost radio, and support individual or group paging.

### PTT ID and Emergency Alert

Each radio can be programmed to send the ID code at the beginning of each transmission, at the end, or both. With radios capable of MDC-1200 alerting, an emergency button can be pressed to initiate the transmission of an emergency alarm signal. This signal takes precedence over any other signal on the console.

## Call Alert and Selective Call Decode

Provides an efficient way to initiate a page or a voice page message to an individual or a group. When the user receives a Call Alert, the radio will continuously generate a series of four tones until the user takes action. When the user receives a Selective Call, the radio will generate alert tones and will un-mute so an incoming message can be heard.

## Radio Check

Allows the system to determine if the radio unit is on the air (powered up) and within communications range without disturbing the radio operator.

## Radio Disable

Allows the console operator to selectively disable a radio in the field in case it falls into "the wrong hands" or is lost.

## Radio Enable

Allows the console operator to selectively enable a radio in the field after it has been disabled.

## Radio Monitor

Allows the console operator to selectively enable a field radio's PTT function, so the operator can monitor the audio without the user's awareness.

## Radio Monitor Disable

Allows the console operator to selectively disable a field radio's PTT function, after it has been enabled.

## CONSOLE PROGRAMMING

The Integrator RD software may be quickly and easily reprogrammed in the field using RDPS (Radio Dispatch Programming System). RDPS provides a versatile Windows-based user interface for modifying the functionality of the CRT and button controls, channel names, paging codes, ANI aliases, function tones and other useful parameters. After the new functions are programmed, the resultant configuration file is saved to disk on the individual host computers of each operating position, on a central configuration file server (if positions are networked), or both. During the set-up process, the Integrator RD software may be configured to look for its configuration file on the remote server. In the event that the server is inaccessible, the console software will revert to the local hard drive to locate the needed configuration files.



A partial list of programmable screen and button controls include:

- Transmit
- Last Call Transmit
- Group Instant Transmit
- Priority Transmit (Supervisory Override)
- Monitor
- Site Intercom
- Alert (Steady Tone, Slow Siren, Fast Siren, Hi/Lo Warble, Beeps)
- All Mute (level and duration are user defined)
- Volume Reset
- Simultaneous Select
- Group Select
- Patch Transmit
- Multiple Patch
- ANI Review
- Priority Marker
- Headset/Speaker
- Page Enter
- Page Clear
- Page Safety
- Page Send
- Console Intercom Call
- Console Intercom Talk
- Console Takeover (supervisory only)
- EDACS Control Keys
- Channel Select
- Frequency Select
- Private Line Select
- Instant Select
- Instant Transmit
- Enhance Volume
- Volume Adjust/Mute
- Patch
- Main/Standby (Base Station Control)
- Answer/Hold
- Phone Release
- Hook-Flash
- ANI Source
- Repeat On/Off
- Coded/Clear
- Second Receiver On/Off
- Wild Card On/Off
- Self Repeat
- Monitor
- Auxiliary Audio Monitor
- IRR Enable
- IRR Play
- IRR Reset
- IRR Prev
- Talk Group Select
- Status
- Status Review
- Emergency

## SPECIFICATIONS

Operating System	Windows® 2000, or Windows® XP Professional.	Pointer	2 or 3 button PS/2 Mouse, or equivalent
Multi-Tasking	Operation is warranted only when used with Zetron provided or Zetron authorized software applications	Serial Ports	One free RS-232 port. Two free ports if touch screen is used. Other Integrator applications may require additional ports.
Hardware Platform	All hardware components must be listed on Microsoft's Windows® Compatible Hardware Products list. PCI and ISA bus support.	Network	Required for advanced options TCP/IP Protocol
Processor	350 MHz or faster, Pentium® or equivalent NOT compatible with Dual-Core processors or Hyper-Threading.		
Data Storage	2 GB or more fixed disk drive, 3.5" floppy drive, 24x minimum CD-ROM drive		
Memory	128 MB minimum, 256 MB recommended for Windows 2000® and XP Pro®.		
Display	1024 x 768 pixel (17" to 19") minimum. Dual monitors recommended for simultaneous operation with Integrator 9-1-1. Touch screen supported.		
Video	4 MB video memory minimum		
Audio	Sound card with speakers		

*For more information on this and other Zetron products, contact:*

**ZETRON USA**  
 PO Box 97004  
 Redmond, WA  
 98073-9704  
 USA  
 TEL 425 820 6363  
 FAX 425 820 7031  
 zetron@zetron.com

**ZETRON UK**  
 27-29 Campbell Court  
 Bramley TADLEY  
 Basingstoke RG26 5EG  
 UK  
 TEL +44 (0)1256 880663  
 FAX +44 (0)1256 880491  
 uk@zetron.com

**ZETRON AUSTRALASIA**  
 PO Box 3045  
 Stafford Mail Centre  
 Stafford QLD 4053  
 Australia  
 TEL +61 7 3856 4888  
 FAX +61 7 3356 6877  
 au@zetron.com

